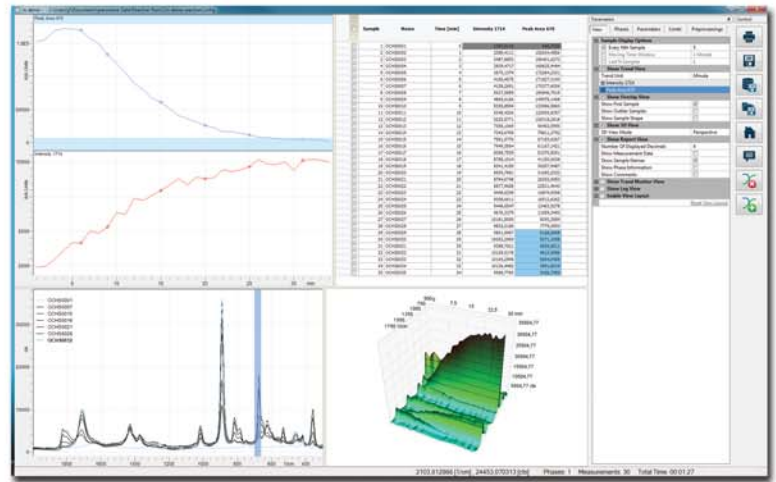




## Reaction Monitoring & Trend Analysis

Track spectral properties of multiple 2D spectra or 3D data while running a chemical reaction

Evaluate peaks and predict properties in real time



Customizable mathematic and chemometric profiling functions

Real time trend line parameter adjustment for simulating different what-if scenarios

Replay function to re-evaluate reaction data with different methods and parameters

Routine & expert user mode with functional access roles - Ideal permission control for laboratory applications

Overlay function to compare trend lines of different reactions

Comprehensive reporting tools to show results as text and graphics including spectral 2D and 3D data